

Figure 1 Geodetic location of Goyeong reservoir

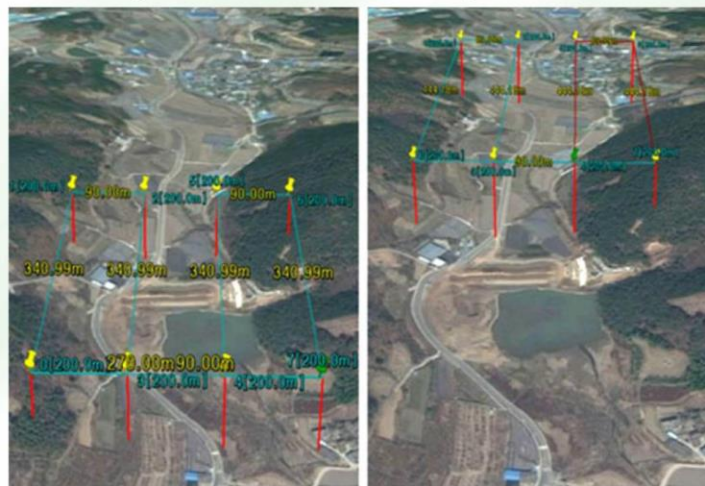


Figure 2 Drone flight paths set up for photogrammetric survey

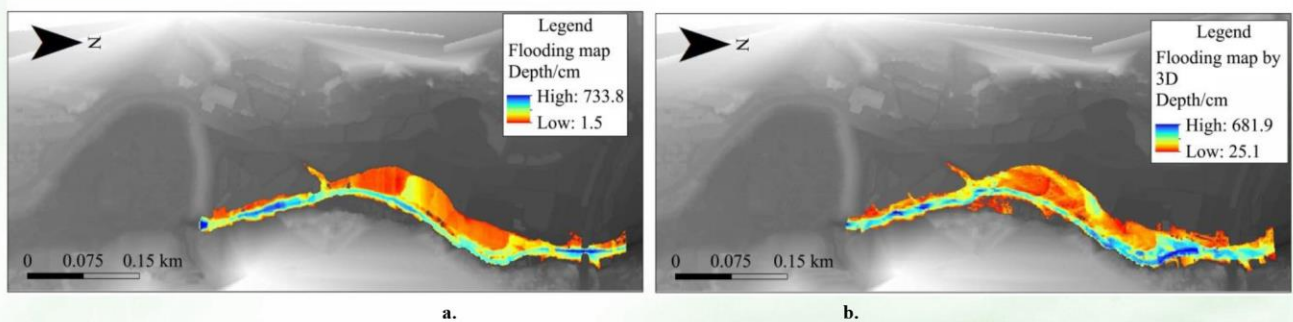


Figure 9 Flooded areas estimated by visual reading (a) and computer simulation methods (b)

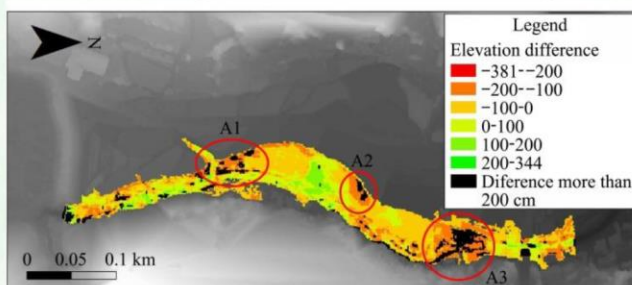


Figure 10 Differences in elevation between visual reading and 3D computer simulation

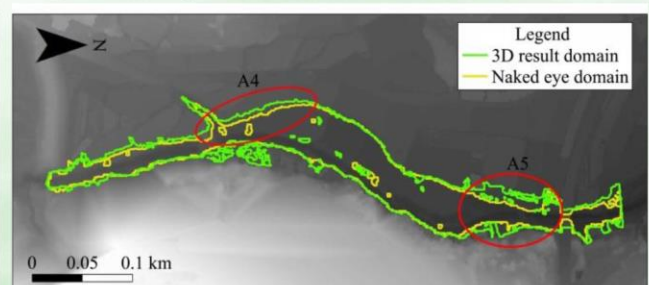


Figure 11 Comparison of flooded areas identified by visual reading and 3D simulation methods

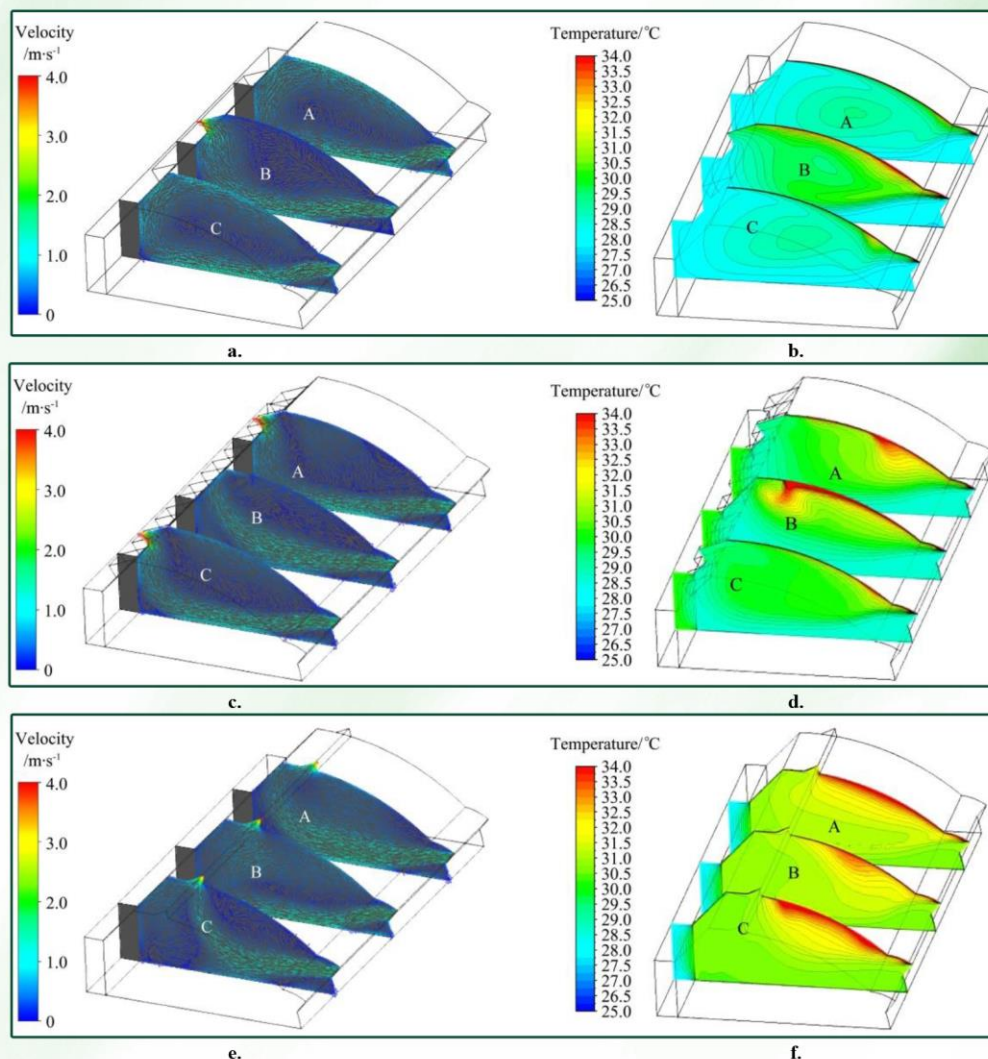


Figure 6 Distribution of air flow field (a, c and e) and temperature field (b, d and f) in greenhouses G1, G2 and G3

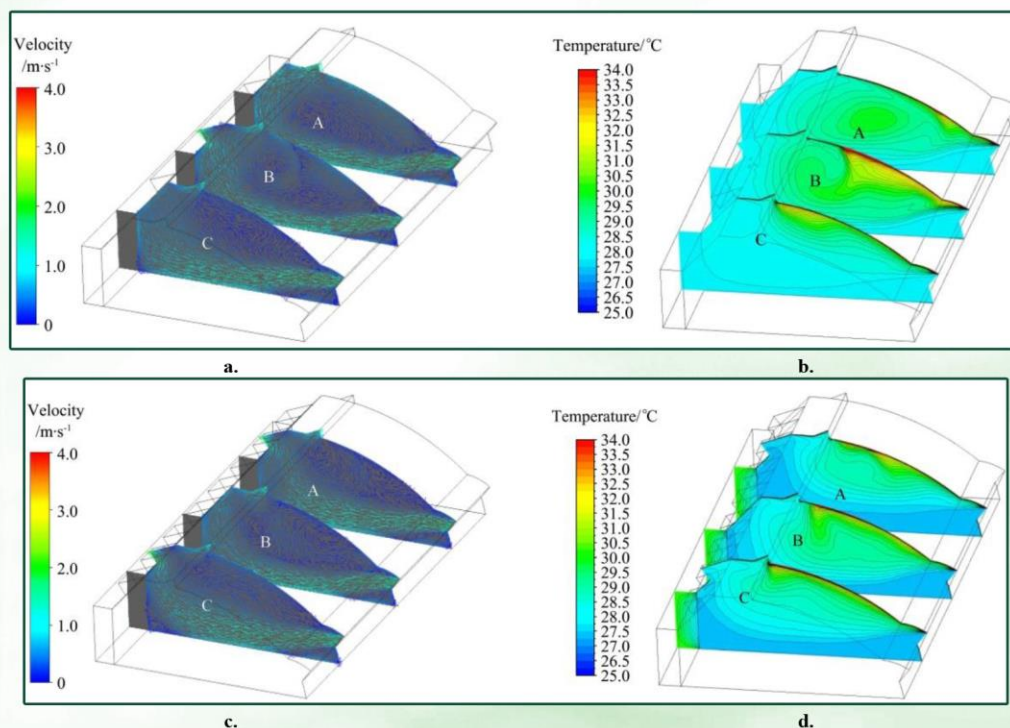


Figure 7 Distribution of air flow and temperature field in the greenhouse with different window opening style combinations