

Figure 10 Q-criterion with vortex line distribution for each section under critical cavitation conditions

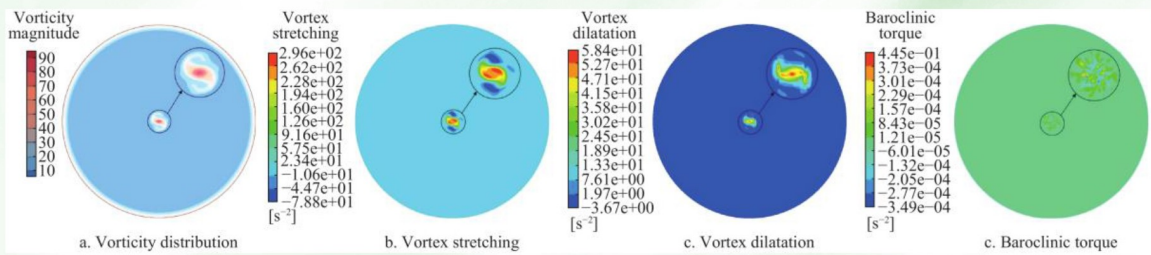


Figure 11 Vorticity distribution, vortex stretching, vortex dilatation, and baroclinic torque terms of Section 1

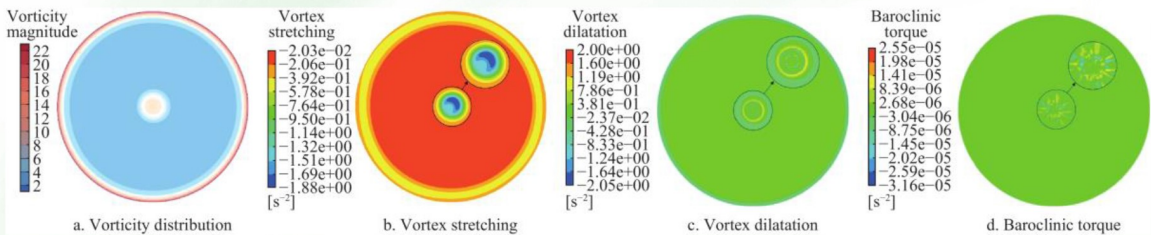


Figure 12 Vorticity distribution, vortex stretching, vortex dilatation, and baroclinic torque terms of Section 2

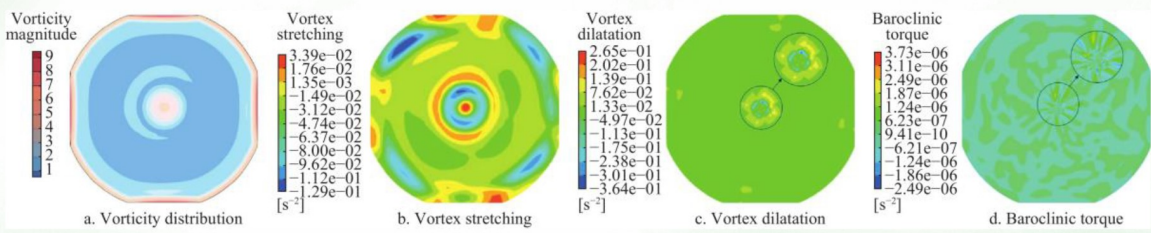


Figure 13 Vorticity distribution, vortex stretching, vortex dilatation, and baroclinic torque terms of Section 3

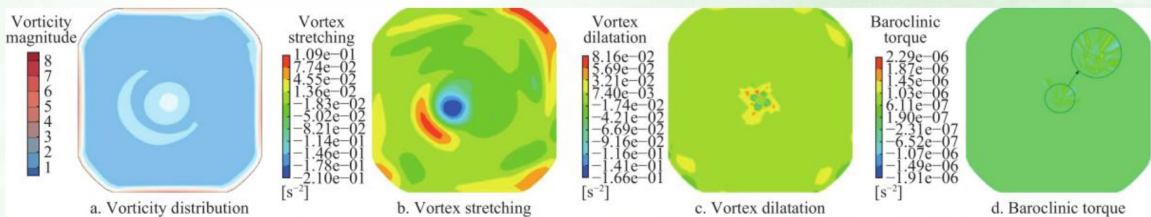


Figure 14 Vorticity distribution, vortex stretching, vortex dilatation, and baroclinic torque terms of Section 4

Wei J, Zhang M F, Wu C C, Ma Q, Wang W T, Wan C F. Accurate crop row recognition of maize at the seedling stage using lightweight network. *Int J Agric & Biol Eng*, 2024; 17(1): 189–198.

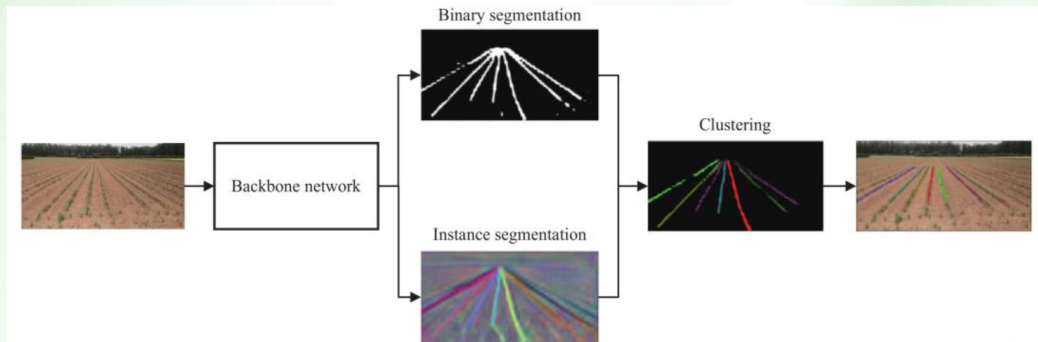


Figure 9 End-to-end structure with multiple branches

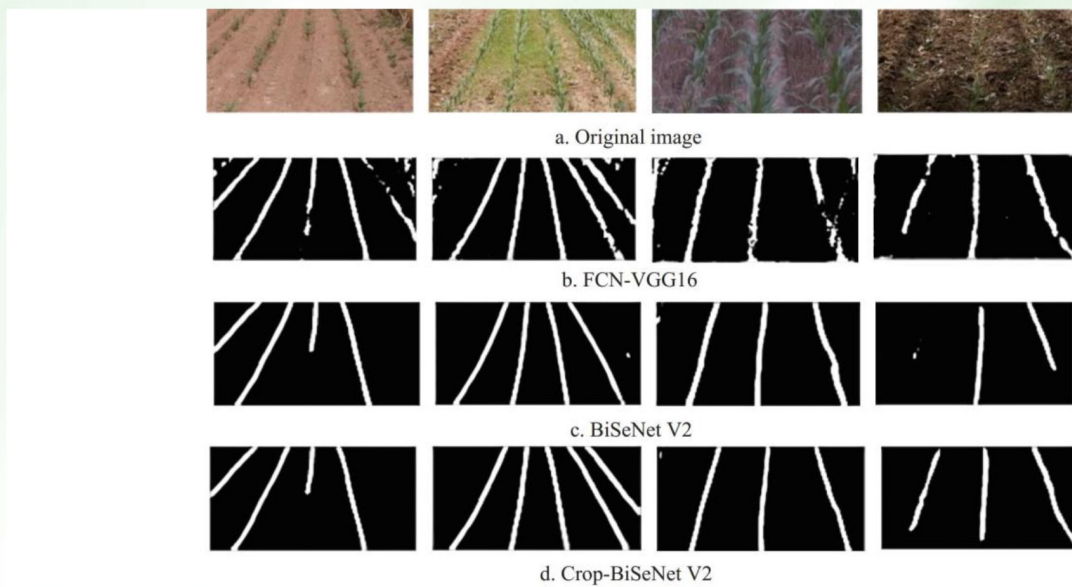


Figure 13 Segmentation results of different models

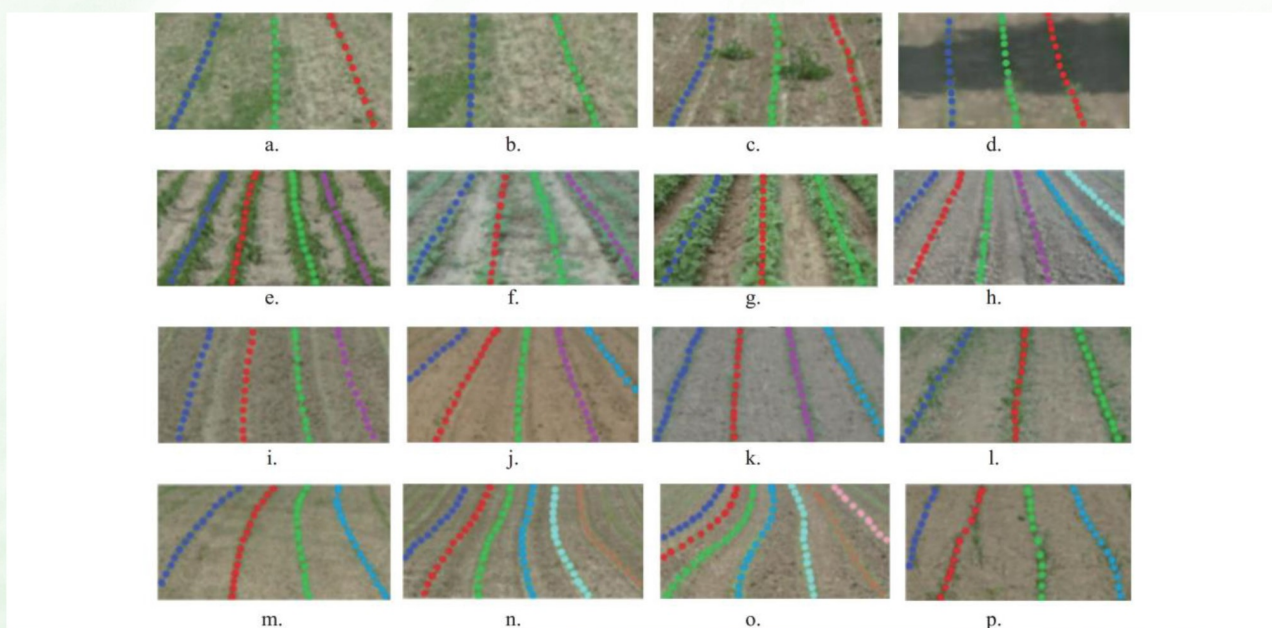


Figure 16 Public data set test results