

Liang R Q, Chen X G, Zhang B C, Wang X Z, Kan Z, Meng H W. Calibration and test of the contact parameters for chopped cotton stems based on discrete element method. *Int J Agric & Biol Eng*, 2022; 15(5): 1–8.



Figure 1 Repose angle of one-sided cotton stem and fitting of repose angle  $\alpha$

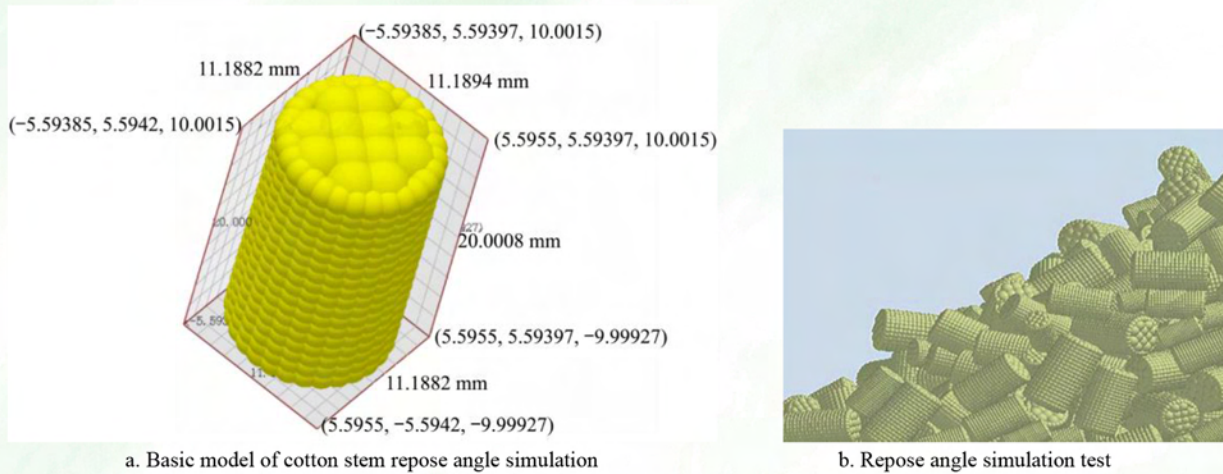


Figure 3 Cotton stem simulation model and repose angle simulation test

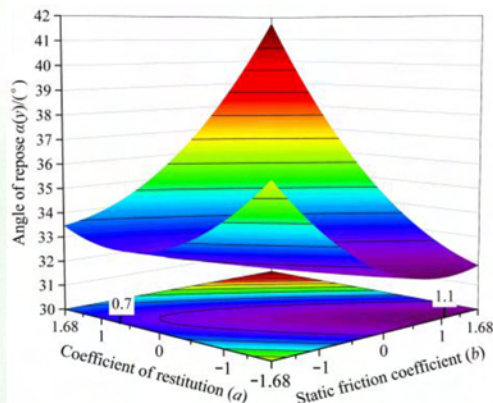


Figure 5 Relation of interaction term  $ab$  vs. repose angle  $\alpha$

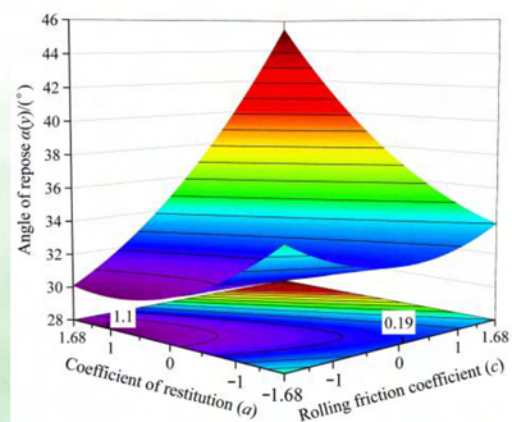


Figure 6 Relation of interaction term  $ac$  vs. repose angle  $\alpha$

Ma Z, Wang Y, Zhang T S, Wang H G, Jia Y J, Gao R, et al. Maize leaf disease identification using deep transfer convolutional neural networks. *Int J Agric & Biol Eng*, 2022; 15(5): 187–195.

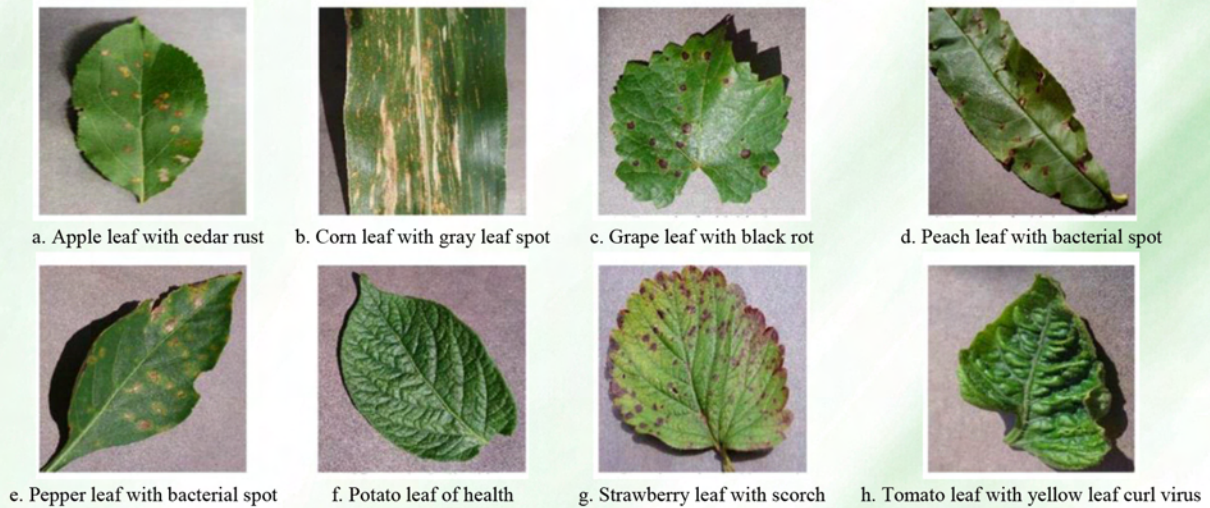


Figure 1 Augmented Plant Village dataset sample images

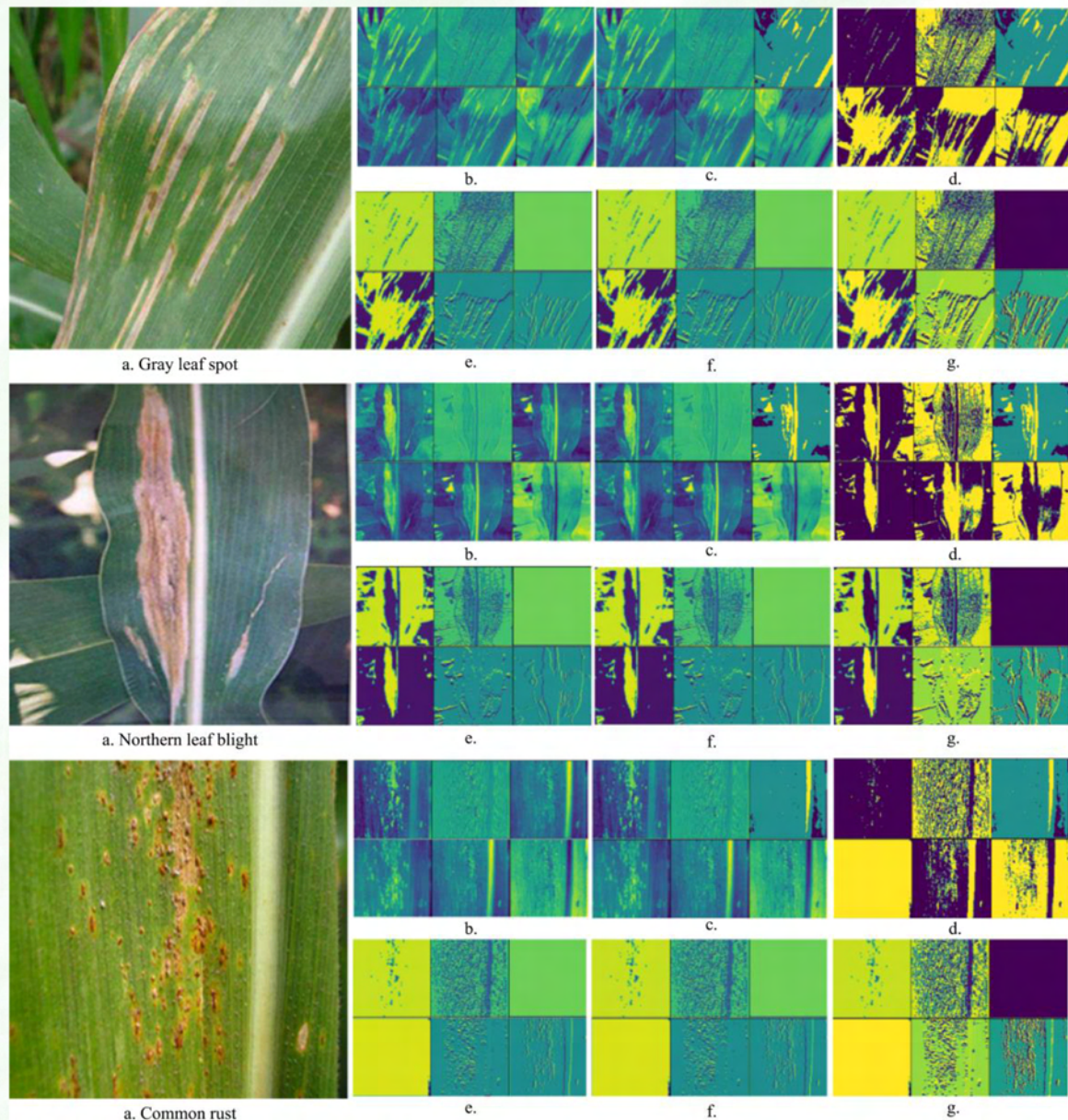


Figure 5 MobileNet internal layer features (a) original image; feature images from (b) convolution, (c) BN, and (d) ReLU6 layers; feature images from (e) depthwise convolution, (f) BN, and (g) ReLU6 layers